

Farm For Sale

91.8 Acres Clay and Buena Vista Counties, IA

Owner—Anderson Family Irrevocable Trust

Property Location

2 miles southeast of Peterson, IA

Legal Description

91.8 tillable acres in

SE 1/4 Section 35 Peterson Twp
and NE 1/4 Section 2 Barnes Twp

Soil Type

- Sac Silty Clay Loam
- Primghar Silty Clay Loam

Cropland CSR2: 91.8

FSA Information

- Cropland 91.8 acres
- Farmland 91.8 acres

	Corn	Beans
Base	46.5	45.3
PLC Yield	155.0	42.0

Real Estate Taxes

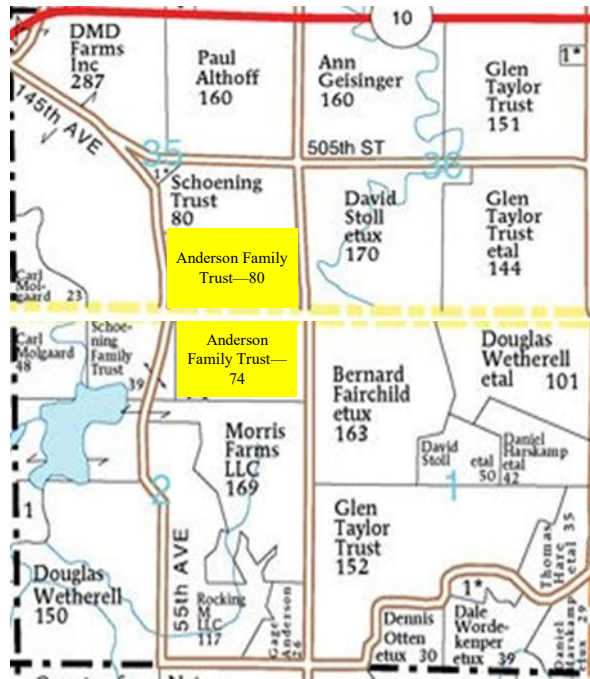
- \$2,975 +/- per year

Terms

- Cash sale

Price

- Call for price and terms



Broker's Comments

This all tillable tract has highly productive soils. This farm is close to good markets.

The information gathered is from sources deemed reliable but cannot be guaranteed by Agriland Inc. All acres are considered more or less.

For additional information:
www.agrilandinc.com
712-363-4535 or 712-580-3553