

# Farm For Sale

80.0 Acres Clay and Buena Vista Counties, IA

Owner—Anderson Family Irrevocable Trust

## Property Location

2 miles southeast of Peterson, IA

## Legal Description

80.0 tillable acres in

SW of SE 1/4 Section 35 Peterson Twp  
and NW of NE 1/4 Section 2 Brooke Twp

### Soil Type

- Sac Silty Clay Loam

**Cropland CSR2: 80.8**

### FSA Information

- Cropland 22.0 acres
- Timber/Pasture 58.0 acres

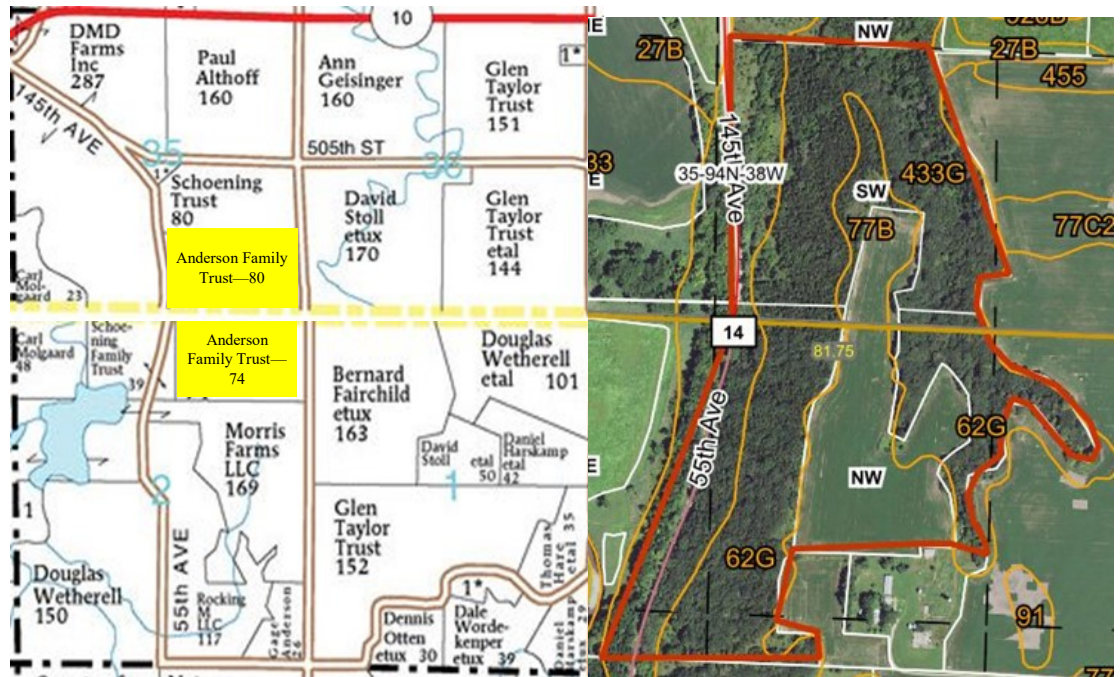
PLC Yield Corn Beans  
155.0 42.0

### Terms

- Cash sale

### Price

- Call for price and terms



### Broker's Comments

*This tract is good for recreation and some farmland for income.*

The information gathered is from sources deemed reliable but cannot be guaranteed by Agriland Inc. All acres are considered more or less.

For additional information:  
[www.agrilandinc.com](http://www.agrilandinc.com)  
712-363-4535 or 712-580-3553