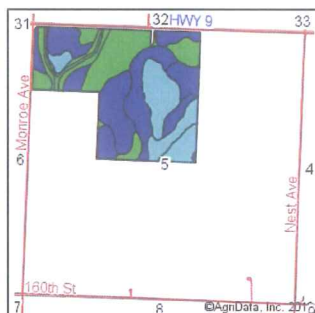
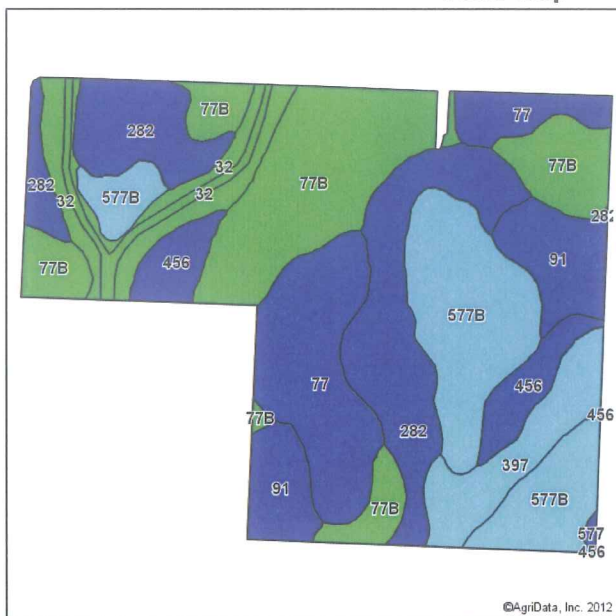


Soils Map



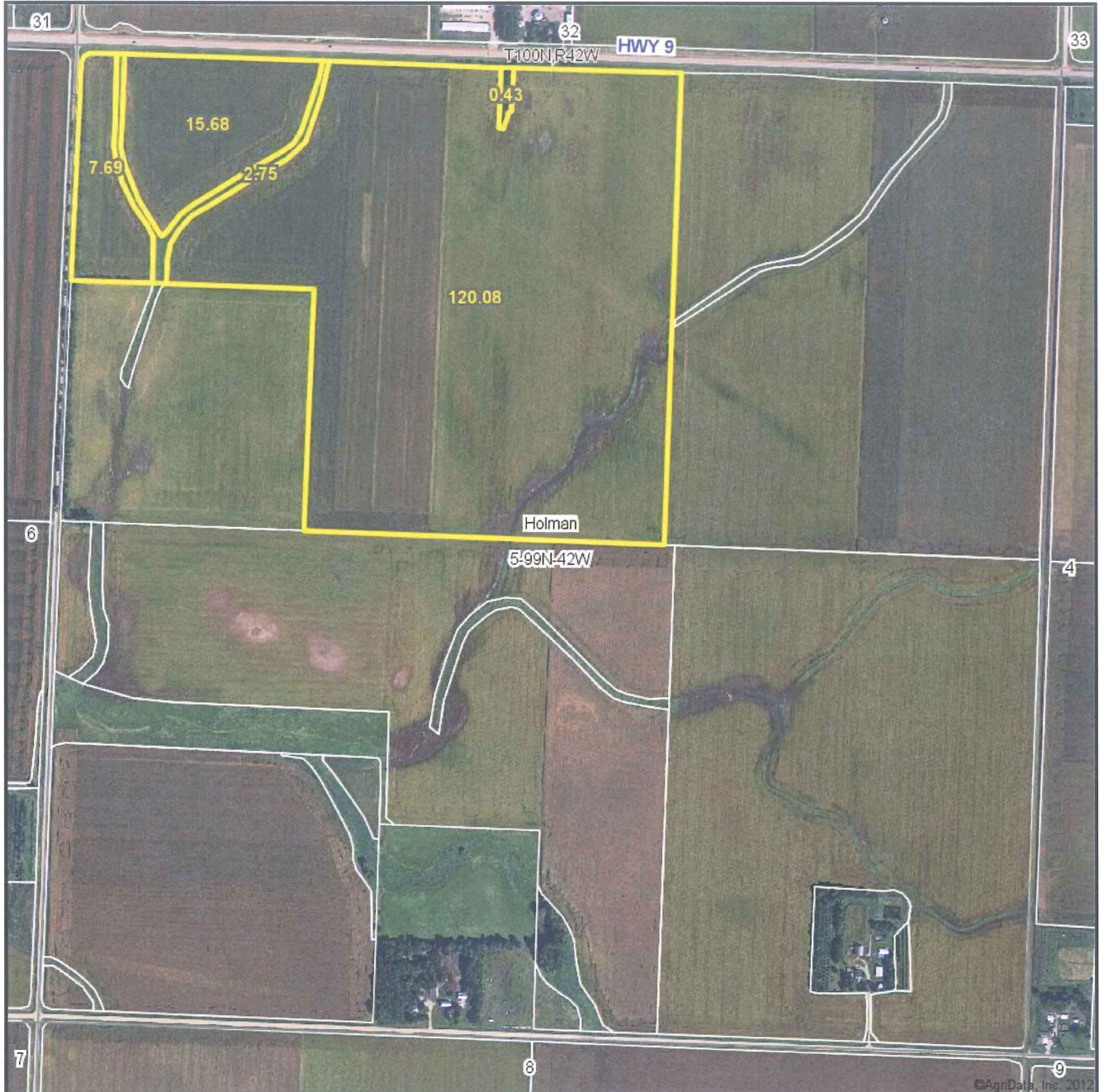
State: **Iowa**
 County: **Osceola**
 Location: **5-99N-42W**
 Township: **Holman**
 Acres: **146.2**
 Date: **5/31/2012**



Field borders provided by Farm Service Agency as of 5/21/2008.
 Soils data provided by USDA and NRCS.

Code	Soil Description	Acres	Percent of field	CSR Legend	Non-Irr Class	CSR	Bromegrass alfalfa	Bromegrass alfalfa hay	Corn	Kentucky bluegrass	Oats	Smooth bromegrass	Soybeans
77B	Sac silty clay loam, 2 to 5 percent slopes	33.3	22.8%		Ile	77	6.9	5.8	193	3.6	145	5.5	68
282	Ransom silty clay loam, 0 to 3 percent slopes	27.5	18.8%		I	82	7.2	6	200	3.7	150	5.7	70
577B	Everly clay loam, 2 to 5 percent slopes	26.1	17.8%		Ile	72	6.7	5.6	187	3.5	140	5.3	65
77	Sac silty clay loam, 0 to 2 percent slopes	20.5	14.0%		I	82	7.2	6	200	3.8	150	5.7	70
91	Primghar silty clay loam, 0 to 2 percent slopes	11.5	7.9%		I	86	7.3	6.1	205	3.8	154	5.8	72
32	Spicer silty clay loam, 0 to 2 percent slopes	11.2	7.7%		llw	76	6.9	5.8	192		144	5.5	67
397	Letri silty clay loam, 0 to 2 percent slopes	8.5	5.8%		llw	72	6.7	5.6	187	3.5	140	5.3	65
456	Wilmington silty clay loam, 0 to 3 percent slopes	7.4	5.1%		I	78	7	5.8	194	3.6	146	5.5	68
577	Everly clay loam, 0 to 2 percent slopes	0.2	0.2%		I	78	7	5.8	195	3.6	146	5.5	68
Weighted Average						78.2	7	5.8	195	3.4	146.3	5.5	68.3

Aerial Map



map center: 43° 25' 31.75, 95° 49' 51.84
scale: 10112

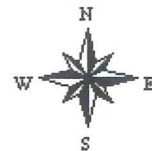
Maps provided by:



©AgriData, Inc. 2012

www.AgriDataInc.com

5-99N-42W
Osceola County
Iowa



5/31/2012

Field borders provided by Farm Service Agency as of 5/21/2008. Aerial photography provided by Aerial Photography Field Office